



WWW.BARRYIND.COM

RP1206CT-1101JN-91



ALUMINA

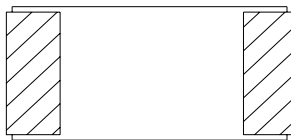
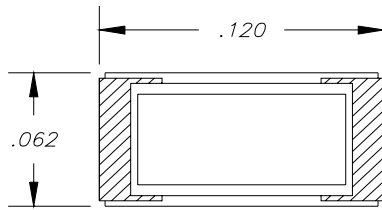
SURFACE MOUNT RESISTOR

Features:

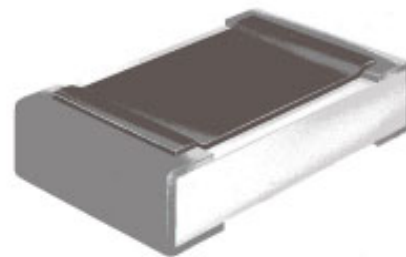
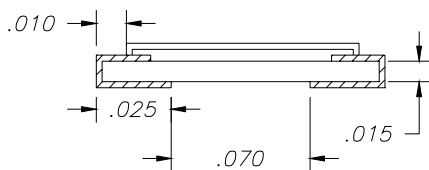
- ◆ Alumina
- ◆ Wrap around
- ◆ CT- Matte Tin over Nickel over Silver

General Description:

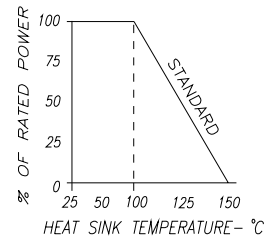
The RP1206CT-1101JN-91 is an 1100 Ohm wrap around resistor. Its compact size is ideal for miniature electronic components.



MOUNTING SURFACE TO HEAT SINK



DERATING CURVE:



Parameter	Min.	Typ.	Max.	Units
Resistance Tolerance		±5		%
Input Power			.5	WATTS
Heat Sink Temperature			100	°C

Barry Industries reserves the right to change part number and or process without notification.

Barry Industries, Inc., 60 Walton St., Attleboro, MA 02703 T: 508-226-3350 F: 508-226-3317 E-mail: ABSales@Vishay.com

Barry Industries maintains an ISO 9001 Certified Quality Management System

Origination Date	Revision Date	Rev.
12/06/06	12/06/06	-